



EXPLORING CAREERS

THE MISSING LINK

Connecting Young Women to 21st Century STEM Careers

MENTORS/ROLE MODELS

It is critical for our young women to have role models of professionals of all types. Barbara provides real-life people whom young women can easily relate to. — Carol Sanchez, CPA, Co-Director Sanchez and Santiago CPA

In **EXPLORING CAREERS** programming, participants learn about resilient real-life women—mentors/role models—successfully working in financially rewarding and personally satisfying careers. Each woman shares her story with the girls to help them imagine themselves in careers they might not have considered.

Sample Mentor/Role Model card: Carpentry Educator/Entrepreneur Michele's story card (<http://www.camkit.info/micheleb.pdf>).

All agree: Young women benefit from being well informed about career opportunities before they need to make long-range decisions in high school.

During creative, hands-on programs, we show young women about the skills, abilities, and interests needed for each career.

Young women learn that knowing math and science and having good communications skills are essential to obtain the rewarding career opportunities shown here.

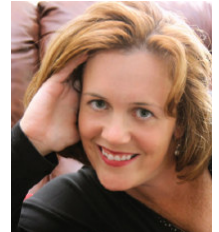
Young women also have fun and learn about science while spending time outdoors exploring environmental careers.



Michele, Carpentry Educator/Entrepreneur



Joelma, Director, Nonprofit Organization/Entrepreneur



Karen, Police Officer



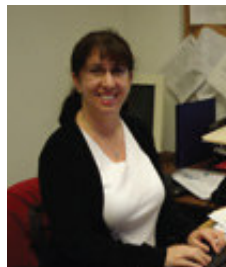
Mary, Environmental Compliance Manager



Diane, Youth Worker/Artist/Legislative Aide



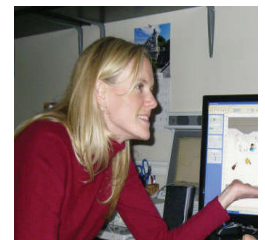
Kim, Women's Business Marketing Consultant/Entrepreneur



Cindy, Quality Control (QA) Software Engineer



Jennifer, Physical Therapist



Melonie, Audiologist/Entrepreneur



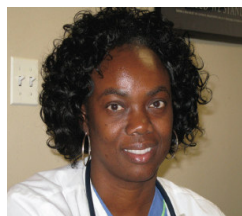
Elena, Operations Engineer



Jan, Quality Control (QA) Medical Devices



Barbara, Locksmith



Justina, Medical Assistant



Carol, Certified Public Accountant/Entrepreneur



Pam, Telecommunications Servicewoman



SandpiperCREATIVE

EXPLORING CAREERS

THE MISSING LINK

Connecting Young Women to STEM Careers

BARBARA PASSERO, DIRECTOR

781-209-0052, 617-999-9546

bpassero@explore-careers.com

<http://www.explore-careers.com>